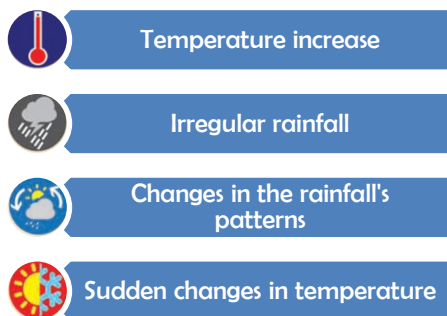


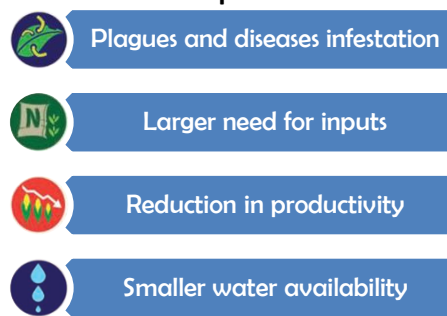
## Weather Data Collection

The obtainment of weather data helps the community to understand how climate and climate changes can affect the coffee production. It can facilitate the understanding of how rainfall and temperature relate to production problems such as pest attacks, disease infestation, weed growth, productivity levels, etc. Besides that, it helps to create local information systems to analyze the climate situation per region, involving the farmers and the community. Materials such as the pluviometer and the thermometer are easily accessible and easy to use.

### Threats



### Impacts



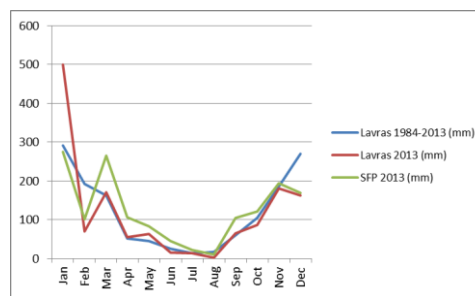
## Steps



*Installation of the measurement equipment*



*Registry of the daily weather information*



*Result processing and interpretation*

## Step by Step

- 1 Identify volunteer farmers who are willing to register weather information and inform their neighbours about events and trends.
- 2 Install the measurement equipment according to the manufacturer's technical recommendations.
- 3 Farmer: take daily measurement of precipitation and temperature (maximum and minimum) and fill out the data sheets.
- 4 Hand over the sheets to technicians so they can monthly process the information.
- 5 Technician: Develop a database with field information so this can be periodically processed and analyzed (per period, per crop, per year or semester).
- 6 Process the information and create tables, graphs or illustrations in order to help visualizing and explaining the results.
- 7 Organize feedback meetings to analyze and discuss results, relating the weather events with the impacts on the community and on the coffee system, such as crop condition, presence of pests and diseases, soil condition, crop forecasts, etc.

The c&c team have observed that with the data collection, the farmers improve their knowledge about the local climate and better understand how their coffee system is influenced by rainfall and temperature. Thus, some climatic expertise is created within the community, capable of explaining to other farmers the events that may be part of climatic changes and impacts on coffee.